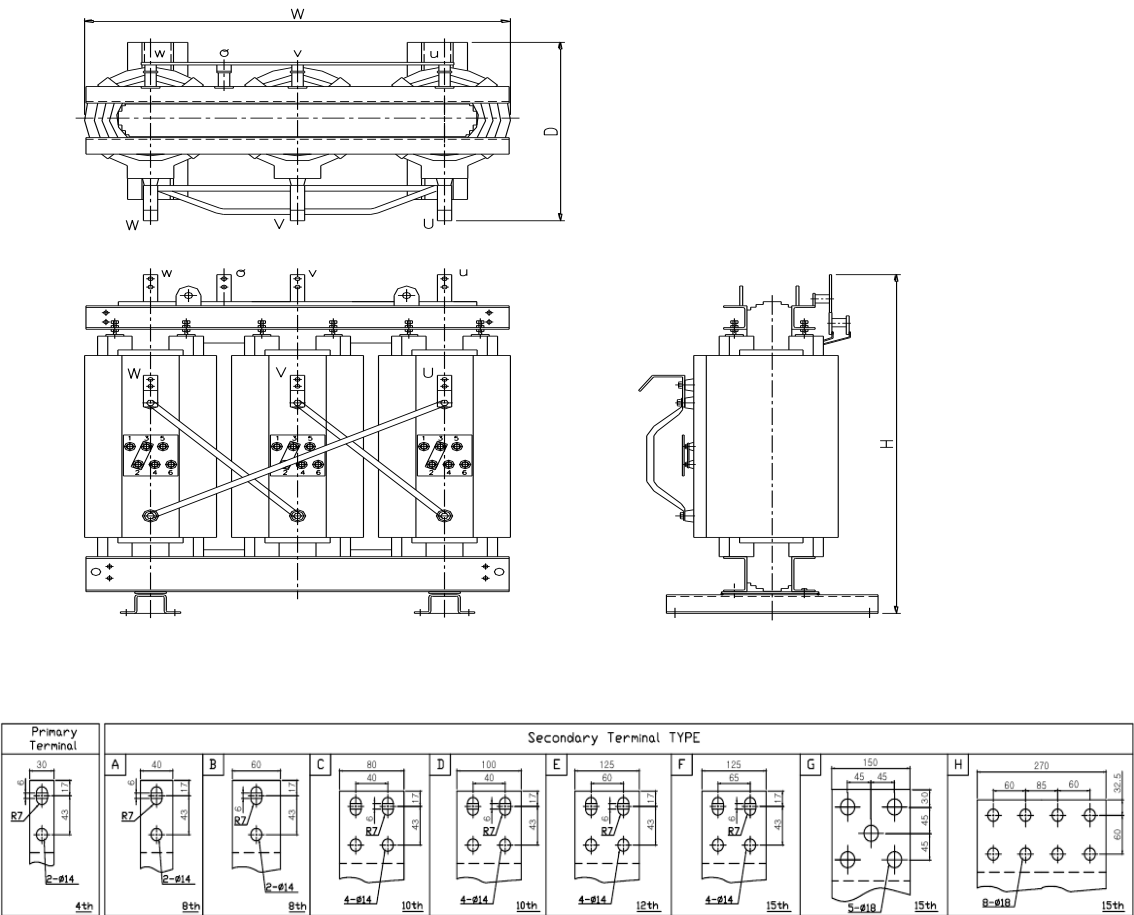


SPECIFICATION [SM-SAAH]

(Standard consumption efficiency)



3P 22.9kV/380-220V

Capacity	% IZ	Efficiency (Load Rate)		No load current	Voltage fluctuation rate	External dimensions(mm)			Weight	LV terminal	
(kVA)	(%)	50%	100%	(%)	(%)	W	D	H	(KG)	T * W	Type
100	4.5	98.90	98.7	2.0	1.3	1340	790	1245	920	8t*40	A
200	5.5	99.00	98.7	1.0	1.3	1315	785	1430	1150	8t*40	A
300	6.0	99.10	98.7	1.0	1.3	1315	785	1430	1250	8t*40	A
400	6.0	99.20	98.9	1.0	1.2	1410	845	1490	1600	8t*60	B
500	6.0	99.20	98.9	1.0	1.1	1470	855	1480	1750	10t*80	C
600	6.0	99.30	99.1	1.0	1.0	1525	865	1540	2100	10t*80	C
750	6.0	99.30	99.1	1.0	1.0	1525	865	1640	2250	10t*100	D
1000	6.5	99.40	99.2	1.0	1.0	1670	950	1760	2800	12t*125	E
1250	7.0	99.40	99.2	1.0	1.0	1730	960	1775	3250	12t*125	E
1500	7.0	99.50	99.3	1.0	1.0	1835	1010	1930	3700	15t*150	G
2000	7.5	99.50	99.3	1.0	1.0	1960	1025	2160	4800	15t*270	H
2500	7.5	99.50	99.3	1.0	1.0	2140	1120	2210	6200	15t*270	H
3000	7.5	99.50	99.3	1.0	1.0	2180	1220	2390	7200	20t*270	H

* The above excess capacity and unwritten SPEC. can also be manufactured by order.